



ADP95CFR

High Speed Automatic Polarimeter

Single Wavelength

SALIENT FEATURES

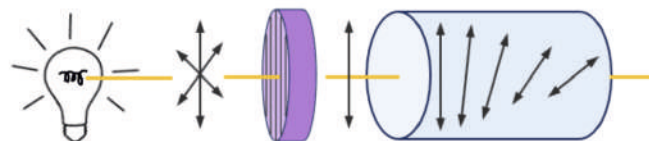
- ✦ GMP / GLP / 21CFR PART 11
- ✦ Android Operating System
- ✦ State - of - Art Control Technology
- ✦ 3 Decimal point Precision
- ✦ 128GB, 1000 Data Storage
- ✦ Internal Peltier Temperature Control
- ✦ Working Wavelength 589 nm
- ✦ 10.1" Colour Touch Screen Display
- ✦ Optical Rotation, Specific Rotation, Sugar, Concentration, User Define
- ✦ 1000 Prestored measurement method can set

About Optical Rotation

"When plane-polarized light passes through an optically active substance, the plane of polarization undergoes rotation by an amount specifically related to the substance it traverses.



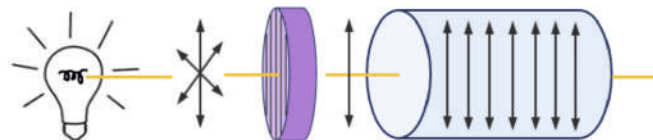
E - Catalogue



Light Source

Polarizer

Optically **active**



Light Source

Polarizer

Optically **inactive**

About 21CFR Part 11

The requirements for submitting documentation in electronic form and the criteria for approved electronic signatures mostly as per 21CFR Part 11

High Speed Automatic Polarimeter

HSN Code : 90275030

SPECIFICATIONS

MODEL	ADP95CFR
Make	LABMAN
Measuring Mode	Optical Rotation, Specific Rotation, Sugar. Concentration, User Define
Measuring range	±90° Optical Rotation ±259°Z Sugar
Frequently Used Method	300
Light Source	LED
Operational Wavelength	589nm
Minimum reading	0.001°C
Accuracy	±0.004°C
Repeatability	± 0.002°C
Operation System	Android
Software	In Built
Min. transmission of samples	0.1%
Response Speed	8° /S
Measurement time	6 times / 26s
Sample temperature control	Yes
Temperature Control mode	Peltier (In-Built)
Temperature Control range	10 -50
Temperature Control accuracy	±0.2
Display	10.1" Colour Touchscreen
Calibration Method	Multipoint - Automatic Calibration
Memory	128GB
Compliance with Regulations	GMP / GLP 21CFR PART 11
Length of Test Tube	100mm & 200mm
Test tubes	200mm 100mm(regular) 100mm(temp control)
Interface	USB & RS232C
Packing Dimension (LxWxH)	870 x 520 x 475mm
Gross Weight	34kg

★ Specifications are subject to change without notice.

STANDARD ACCESSORIES : Main Instrument, 100mm Glass Test Tube, 200mm Glass Test Tube, Syringe with needle, Fuse, Power Cable, Test Tube Accessories, 100mm Peltier Tube, Test Tube Cleaning Brush, Peltier Cleaning Brush, Touch Pen, Instruction Manual, Test Certificate.

ADP95CFR - High Speed Automatic Polarimeter

User Permission List / Function Configuration List

Sr.No.	Permission name	Software
1	Measure sample	√
2	Calibrate instrument	√
3	Query measurement record	√
4	Export measurement record	√
5	Upload measurement record	√
6	Print measurement record	√
7	Delete measurement record	×
8	View measurement detail	√
9	Electronic signature [Confirms]	√
10	Electronic signature [Review]	√
11	Electronic signature [Approve]	√
12	Export measurement detail	√
13	Upload measurement report	√
14	Print measurement report	√
15	Back up data to USB stick	√
16	Back up data to FTP	√
17	Set regular backup	√
18	Query user	√
19	New user	√
20	Edit user	√
21	Delete user	×
22	Query method	√
23	New method	√
24	Edit method	√

Sr.No.	Permission name	Software
25	Delete method	×
26	language setting	√
27	Screen brightness setting	√
28	Network setting	√
29	Communication setting	√
30	Micro printer	√
31	Code scanning setting	√
32	Automatic setting	√
33	Time setting	√
34	Restore factory setting	√
35	Default setting	√
36	Password policy	√
37	Login policy	√
38	Lock screen policy	√
39	Query warning record	√
40	Export warning record	√
41	Print warning record	√
42	Query operation record	√
43	Export operation record	√
44	Print operation record	√
45	View operation detail	√
46	Export operation detail	√
47	Print operation detail	√

ADP95CFR - High Speed Automatic Polarimeter

Display Screen Reference

