

Gas Chromatography

GC10CI



E - Catalogue

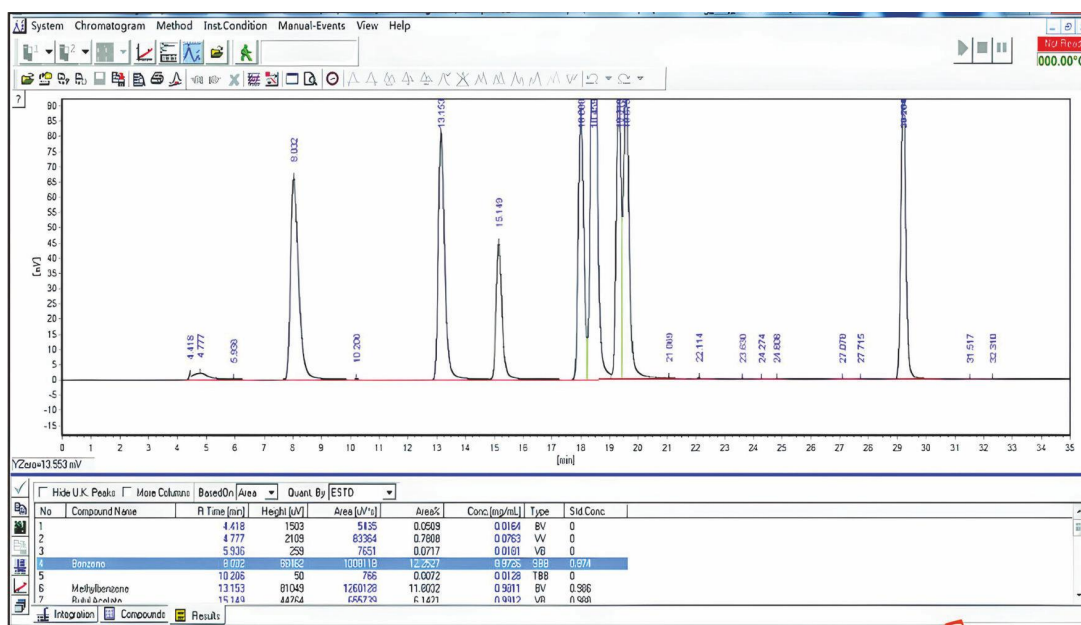
SALIENT FEATURES

- ◆ Control system: designed for monitoring and controlling the instrument via the computer.
- ◆ Column Compartment/oven with superior thermal performance, multistage (10 ramps) programmed temperature control function. (supported by “control system”)
- ◆ Advanced built-in data acquisition system , supporting real time instrument status monitoring, detection signal acquisition and PC control
- ◆ Column oven accommodates 1 capillary columns, and supports quick heat-up and rapid cool-down with automated back-door opening.
- ◆ Sample introduction system: one sample injector is installed
- ◆ Sample detection system: 1 high sensibility and stability detector FID for various organic compounds application
- ◆ 1 analog signals output.
- ◆ Software, compatible with GLP/FDA-21 CFR Part11 requirements and regulations (electronic records and signatures)

- FID General Application: Nitrobenzene compounds (nitrobenzene, dinitrotoluene)
 Chlorobenzene compounds (chlorobenzene, dichlorobenzene, trichlorobenzene)
 Benzene, benzene series (toluene, ethylbenzene, o-xylene, m-xylene, p-xylene, styrene, cumene),
 TVOC (Total Volatile Organic Compounds)
 Phenolic compounds (phenol, cresol)
 According to the actual test circumstance, some need to add headspace sampler or thermal analysis instrument as per application.

Software: Advanced computer Control System

- Superior performance with advanced, computer-based temperature control system
- High temperature accuracy (optimum $\pm 0.02^\circ\text{C}$), high reliability, and anti-interference
- Self-diagnosis/ self-protection function (overheat protection, power-off protection, etc.)
- Intuitive display of timing program, detector status, measurement range, current setting, etc



Computer not available with instrument. User must have a computer to connect the software

Gas Chromatography

HSN Code : 90272000

SPECIFICATIONS

MODEL	GC10CI
Make	LABMAN
Sample Introduction System	Capillary Injector
Column Oven	As Below
Temperature Range	RT +7°C ~ 400°C (in 1°C increment)
Temperature Accuracy	± 0.02°C
Cooling time	400°C to 50°C in 8-10 min at 25°C ambient
Programmed temp. setting	0.1°C~40°C/min (in 1°C increment)
Program ramps	7 ramps standard (Upto 10 ramps with Software)
Inside Size (L x W x H) mm	284 x 280 x 241mm
Outside Size (L x W x H) mm	340 x 345 x 281mm
Detector	FID
Detection limit	≤3×10 ⁻¹² g/s
Drift	≤6×10 ⁻¹³ A/30min
Linearity range	≥10 ⁶
General	As Below
Power	2000W
Power Supply	220V /50Hz
Packing size (L x W xH)	830 x 680 x 855mm
Gross Weight (Approx.)	79kg

★ Specifications are subject to change without notice.

Optional Accessory: Auto sampler ASGC22
Optional: Air source/flow rate control device

STANDARD ACCESSORIES: Main Instrument Set, Power Cord, Instruction Manual, Test Certificate